

General - Gas Flow Requirements Document

Model Documentation



The European message format for the gas market

Version 6.1

Document Version: 2
Schema Version: 1

Table of Contents

26		
27		
28	1 Model Detail.....	3
29	2 Document usage decision table.....	4
30	3 Gas Flow Requirements Process	6
31	3.1 Business Process	6
32	3.1.1 Use Case.....	6
33	3.1.2 Sequence	7
34	3.1.2.1 System Operator request to nominate.....	7
35	3.1.2.2 Flow commitment sequence	8
36	3.1.2.3 TSO to TSO gas flow	9
37	3.2 Gas Flow Requirements Document (FLOWRQ)	10
38	3.2.1 Gas Flow Requirements Document Contextual Model	10
39	3.2.2 Gas Flow Requirements Document Assembly Model.....	11
40	3.2.2.1 GasFlowRequirements_Document.....	12
41	3.2.2.1.1 Attributes	12
42	3.2.2.2 ConnectionPoint	12
43	3.2.2.2.1 Attributes	12
44	3.2.2.3 Period	12
45	3.2.2.3.1 Attributes	12
46	3.2.2.4 Quantity	13
47	3.2.2.4.1 Attributes	13
48	4 Document Change Log.....	14
49	4.1 Version	14
50	4.1.1 Attributes	14
51		

1 Model Detail

COPYRIGHT & LIABILITY

The Edig@s Workgroup (EASEE-Gas Message and Workflow Design Working Group) disclaims and excludes, and any user of the Edig@s Workgroup Implementation Guidelines acknowledges and agrees to the Edig@s Workgroup disclaimer of, any and all warranties, conditions or representations, express or implied, oral or written, with respect to the guidelines or any part thereof, including any and all implied warranties or conditions of title, non-infringement, merchantability, or fitness or suitability for any particular purpose (whether or not the Edig@s Workgroup knows, has reason to know, has been advised, or is otherwise in fact aware of any such purpose), whether alleged to arise by law, by reason of custom or usage in the trade, or by course of dealing. Each user of the guidelines also agrees that under no circumstances will the Edig@s Workgroup be liable for any special, incidental, exemplary, punitive or consequential damages arising out of any use of, or errors or omissions in, the guidelines.

2 Document usage decision table

The following decision table provides a summary of the message requirements depending on the type of message:

Gas Flow Requirements Document	System Operator Request to Nominate	Flow Commitment	TSO to TSO Gas Flow
identification	Mandatory		
version	Mandatory		
documentCode	AQG = System Operator Request to Nominate (Refer to Edig@s DocumentCodeTypeCodeList for the list of valid codes).	ARG = Flow Commitment (Refer to Edig@s DocumentCodeTypeCodeList for the list of valid codes).	ASG = TSO to TSO gas flow (Refer to Edig@s DocumentCodeTypeCodeList for the list of valid codes).
creationDateTime	Mandatory		
validityPeriod	Mandatory		
issuer_MarketParticipant.identification	Mandatory; codingScheme = 305 (EIC X code))		
issuer_MarketParticipant.marketRole.code	ZUO = LNG System Operator ZUS = Storage System Operator (Refer to Edig@s RoleCodeTypeCodeList for the list of valid codes).	ZUW = Transmission System Operator (Refer to Edig@s RoleCodeTypeCodeList for the list of valid codes).	ZUW = Transmission System Operator (Refer to Edig@s RoleCodeTypeCodeList for the list of valid codes).
recipient_MarketParticipant.identification	Mandatory; codingScheme = 305 (EIC X code)		
recipient_MarketParticipant.marketRole.code	ZSH = Balance Responsible Party (Refer to Edig@s RoleCodeTypeCodeList for the list of valid codes).	ZSH = Balance Responsible Party (Refer to Edig@s RoleCodeTypeCodeList for the list of valid codes).	ZUW = Transmission System Operator (Refer to Edig@s RoleCodeTypeCodeList for the list of valid codes).
ConnectionPoint.identification	Mandatory; codingScheme = 305 (EIC Measurement Point Z or Y code) or ZSO		
ConnectionPoint.measureUnit.unitOfMeasureCode	KW1 = Kilowatt hour per hour (Refer to Edig@s UnitOfMeasureCodeTypeCodeList for the list of valid codes).	KW1 = Kilowatt hour per hour Refer to Edig@s UnitOfMeasureCodeTypeCodeLi st for the list of valid codes).	KW1 = Kilowatt hour per hour MQH = Cubic meter per hour Refer to Edig@s UnitOfMeasureCodeTypeCodeList for the list of valid codes).
ConnectionPoint.account.identification	Not used	Mandatory	Used if necessary
ConnectionPoint.account.accountTso.identification	Not used	Used if necessary	Used if necessary
Period.timeInterval	Mandatory		

Gas Flow Requirements Document	System Operator Request to Nominate	Flow Commitment	TSO to TSO Gas Flow
Quantity.direction.gasDirectionCode	Z02 = Input, Z03 = Output Refer to Edig@s GasDirectionCodeTypeCodeList for the list of valid codes).		
Quantity.amount	Mandatory.		
Quantity.quantityCode	Used if necessary ZYG = Minimum Refer to Edig@s QuantityCodeTypeCodeList for the list of valid codes).	Used if necessary ZYG = Calculated Refer to Edig@s QuantityCodeTypeCodeList for the list of valid codes).	Used if necessary ZYG = Calculated Refer to Edig@s QuantityCodeTypeCodeList for the list of valid codes).

65
66

3.1.2 Sequence

3.1.2.1 System Operator request to nominate

A System Operator informs a Balance Responsible Party of the minimum amount of gas to be nominated to a market area .

During the nomination process (shown here for understanding) the Balance Responsible Party nominates the quantity to be output from the Storage or LNG area. The Balance Responsible Party also nominates the quantity of gas that will be input to the Transmission System Operator market area.

The System Operator and Transmission System Operator exchange DELORD/DELRES messages to confirm the nominations.

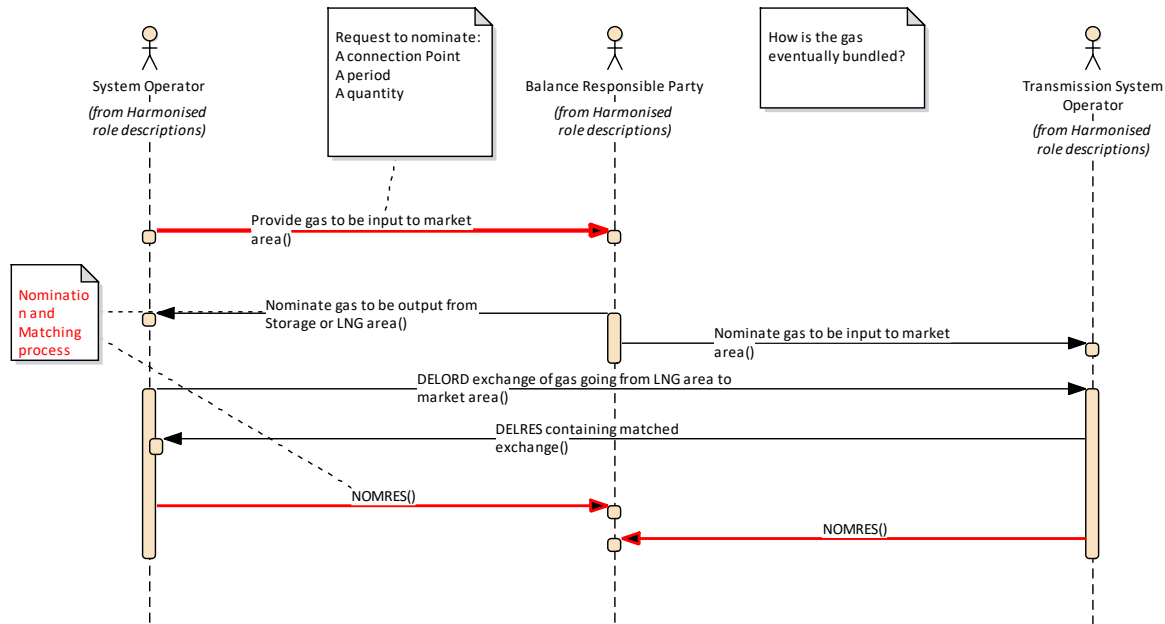


Figure: 2 System Operator request to nominate

3.1.2.2 Flow commitment sequence

A Transmission System Operator informs a Balance Responsible Party of gas that has been committed to be input the market area.

During the nomination process (shown here for understanding) the Balance Responsible Party nominates the quantity of gas to be input to the Transmission System Operator market area. The Balance Responsible Party also nominates the quantity of gas that will be output from a neighbouring Transmission System Operator market area.

Both Transmission System Operators exchange DELORD/DELRES messages to confirm the nominations.

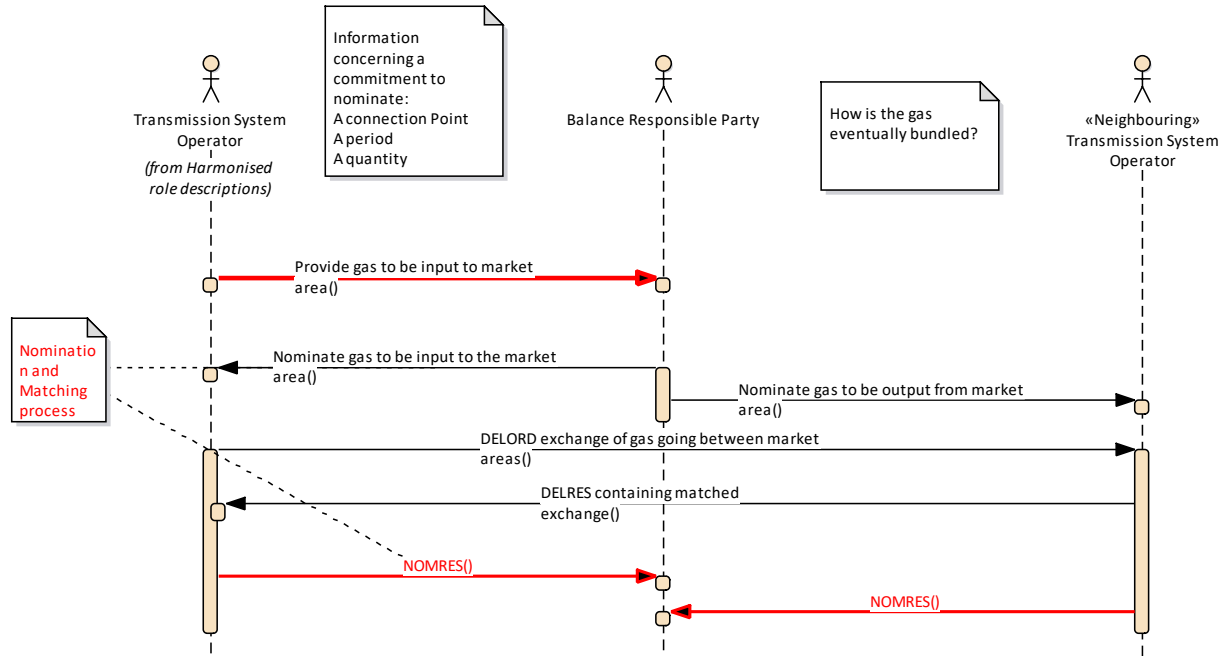


Figure: 3 **Flow commitment sequence**

3.1.2.3 TSO to TSO gas flow

A TSO informs a neighbouring TSO of the physical flow per hour that is required for system operation

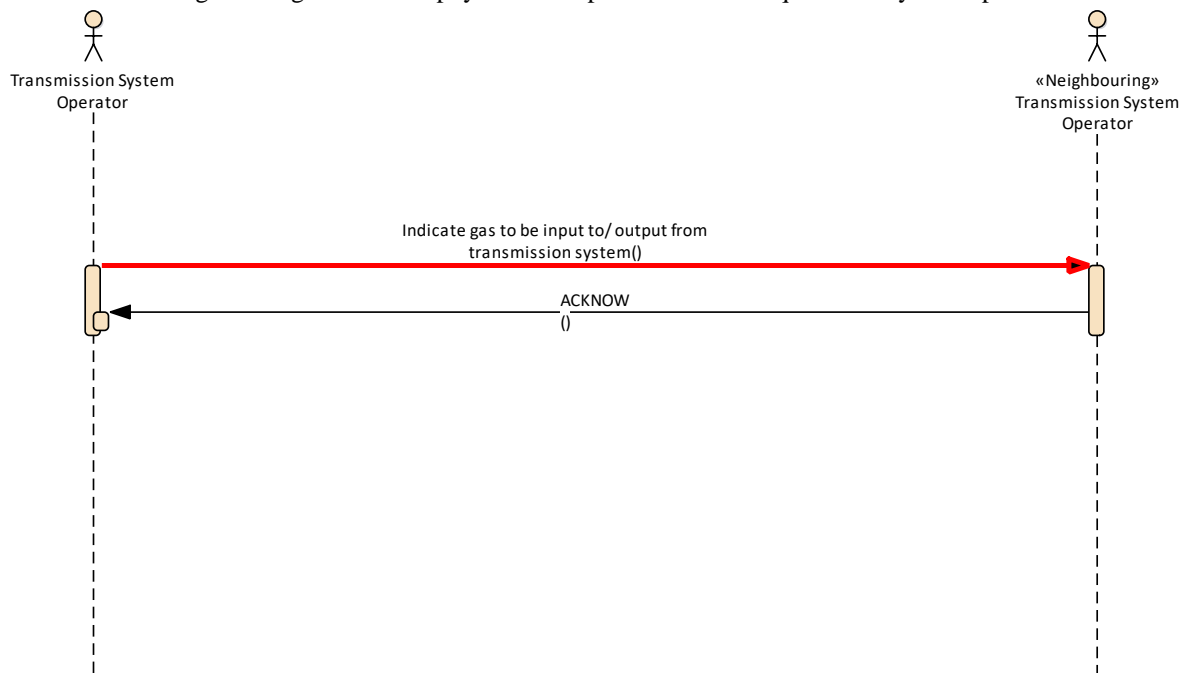


Figure: 4 TSO to TSO gas flow

3.2 Gas Flow Requirements Document (FLOWRQ)

A Gas Flow Requirements document is used in three contexts:

1. To enable a System Operator to inform a Balance Responsible Party of a quantity of gas that is to be injected into a market area.
2. To enable a Transmission System Operator to inform a Balance Responsible Party of the quantity of gas that has been committed for injection or for extraction.
3. To enable a Transmission System Operator to inform a neighbouring Transmission System Operator of a quantity of gas that is to be injected or extracted.

3.2.1 Gas Flow Requirements Document Contextual Model

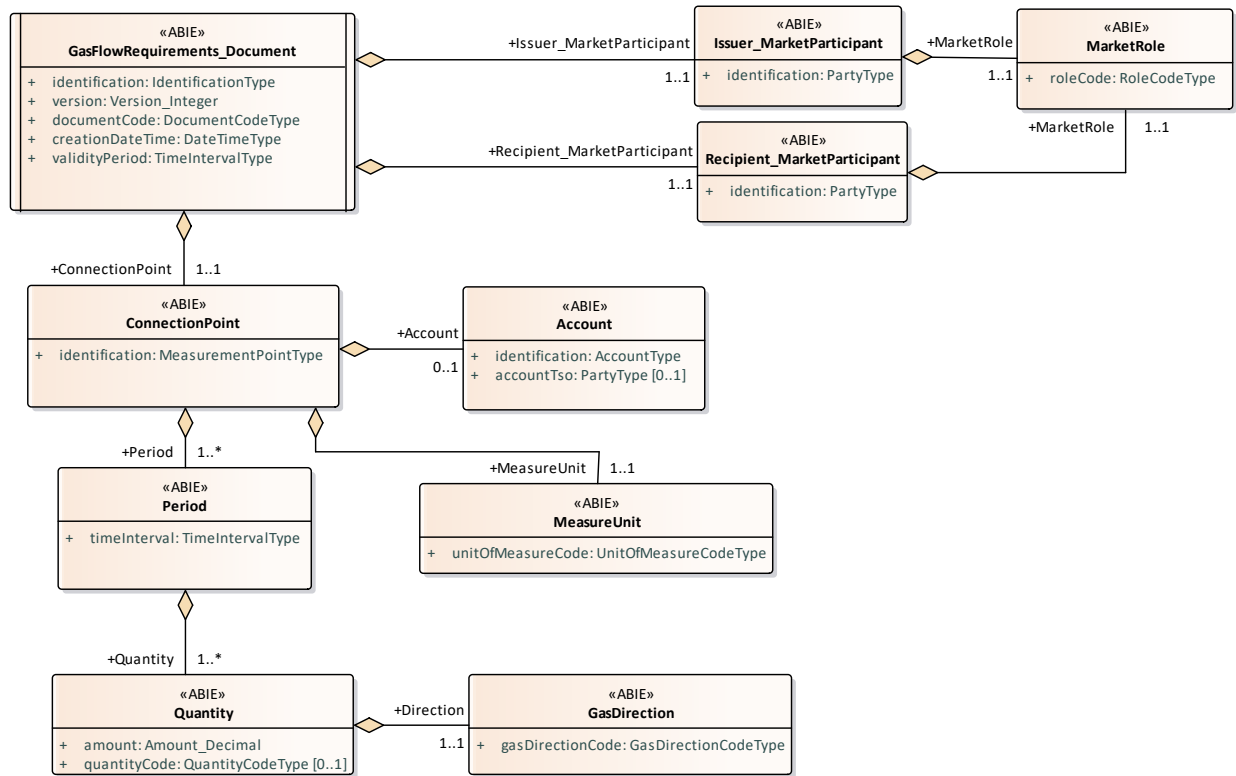


Figure: 5 Gas Flow Requirements Document Contextual Model

3.2.2 Gas Flow Requirements Document Assembly Model

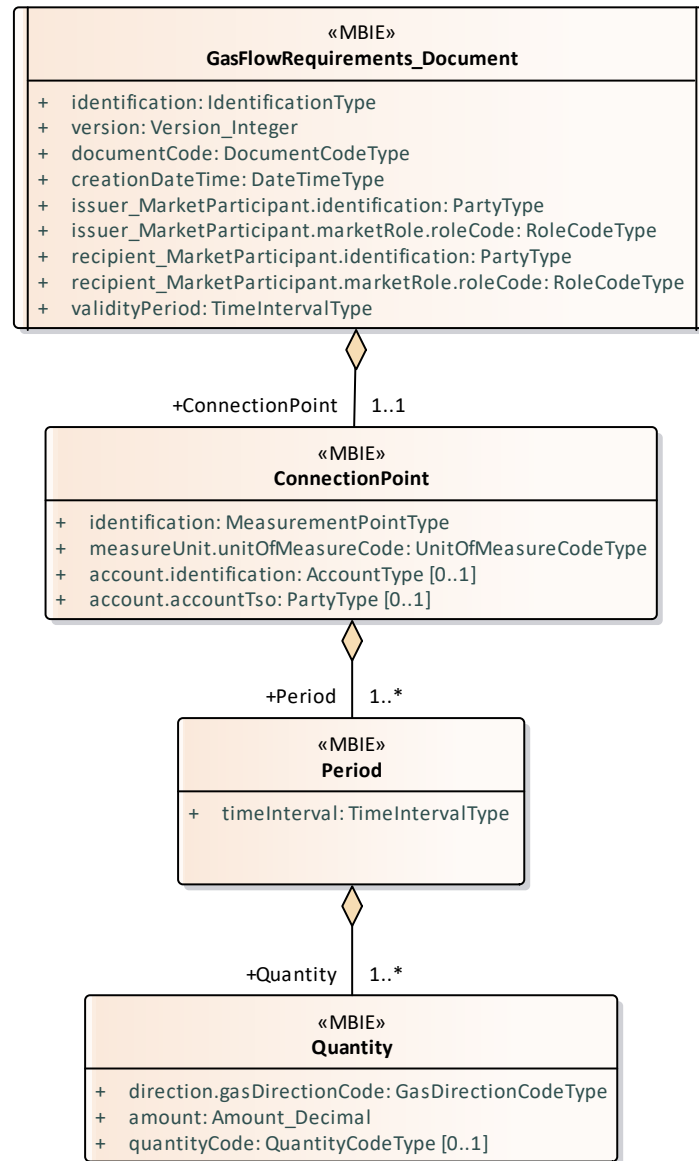


Figure: 6 Gas Flow Requirements Document Assembly Model

3.2.2.1 GasFlowRequirements_Document

This class provides the basic information needed to describe most electronic documents.

3.2.2.1.1 Attributes

Attribute	Description	Multiplicity
identification	A unique identification of a document that is assigned by the issuer.	
version	Version of the document being sent. The first version number for a given document identification shall normally be 1. The document version number must be incremented for each retransmission of a document that contains changes to the previous version. The receiving system shall only accept a document with a version number which is greater than the previous version number of the same document.	
documentCode	Coded representation of the type of the electronic document.	
creationDateTime	Date and time of the creation of the current document expressed in UTC.	
issuer_MarketParticipant.identification	The identification of the party participating in the market. --- The Issuer of the electronic document.	
issuer_MarketParticipant.marketRole.roleCode	A code identifying the role played by a market participant in the market. --- The Issuer of the electronic document. --- The role of the Issuer.	
recipient_MarketParticipant.identification	The identification of the party participating in the market. --- The Recipient of the electronic document.	
recipient_MarketParticipant.marketRole.roleCode	A code identifying the role played by a market participant in the market. --- The Recipient of the electronic document. --- The role of the Recipient.	
validityPeriod	The start and end date and time of the period of validity covered in the document.	

3.2.2.2 ConnectionPoint

A cross-border interconnection point, whether it is physical or virtual, between two or more Member States as well as interconnection between adjacent entry-exit-systems within the same Member States, in so far as these points are subject to booking procedures by Network Users. It may be used on the internal market.

3.2.2.2.1 Attributes

Attribute	Description	Multiplicity
identification	The identification of a connection point.	
measureUnit.unitOfMeasureCode	The coded representation of a unit of measure using the UN/CEFACT Recommendation 19 common codes.	
account.identification	The identification of an account. --- The account that may be used in the transaction.	[0..1]
account.accountTso	The identification of the TSO responsible for an account identification. --- The account that may be used in the transaction.	[0..1]

3.2.2.3 Period

The period that the dependent information is for.

3.2.2.3.1 Attributes

Attribute	Description	Multiplicity
timeInterval	The start and end date and time for the period. The time is expressed in UTC.	

3.2.2.4 Quantity

The quantity of an object.

3.2.2.4.1 Attributes

Attribute	Description	Multiplicity
direction.gasDirectionCode	A code identifying the direction of a gas flow. --- The direction of a quantity.	
amount	The amount of a quantity.	
quantityCode	A code defining the type of a quantity.	[0..1]

4 Document Change Log

4.1 Version

4.1.1 Attributes

Attribute	Description	Multiplicity
Version 1 2020-06-29	Initial release	
Version 2 2021-04-26	Release 6.1 Updated decision table, use case and sequence diagrams to allow for ZO3 (output) as gas direction.	